



Bologna Airport – CARGO PRESENTATION



2014 APRIL





The right position is key

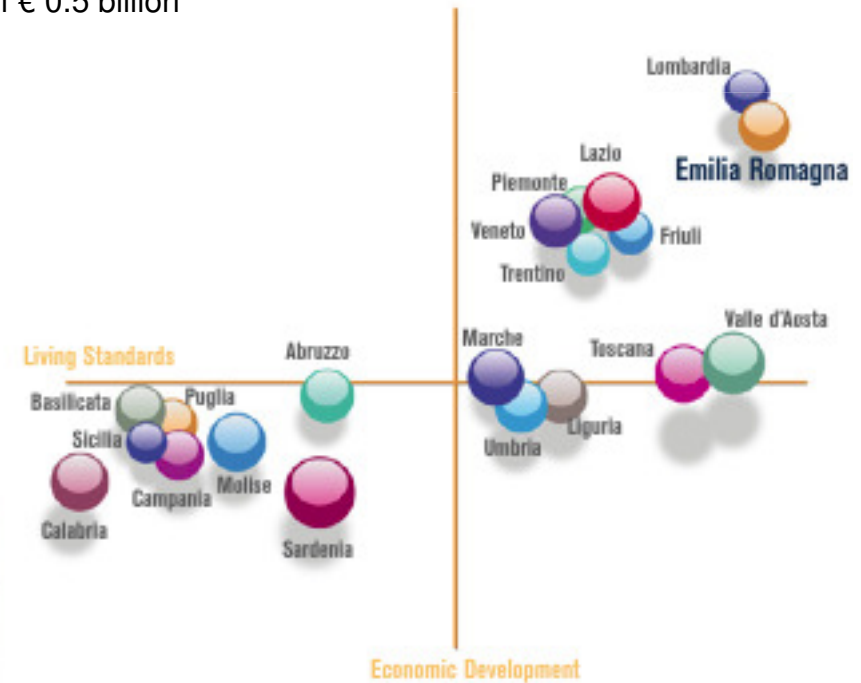
Bologna is located:



- in the centre of one of Europe's most flourishing markets
GDP per CAPITA* - Europe: USD 33.100 - Italy: USD 35.200 - Emilia Romagna (Bologna): USD 43.100
- in the heart of Italy's most important area in terms of socioeconomic development

ITALIAN MARKET OVERVIEW:

- 3rd in Europe in terms of import / export revenue - € 2 billion value based on an Import of € 1.5 billion and an Export of € 0.5 billion
- 2nd in Europe in terms of value of goods



* Source: year 2006 Eurostat



Bologna Airport

When it comes to truck delivery, the sooner means the better

- Bologna Airport is a central location in Southern Europe as far as major cargo destinations are concerned

DISTANCE AND TRAVEL TIMES BY ROAD

	km	h
MILAN	208	2
VENICE	157	2,10
ANCONA	234	2,15
TURIN	328	3,12
ROME	388	3,45
LJUBLJANA	377	3,50
ZURICH	491	5
MUNICH	554	5,10
ZAGREB	510	5,20
MARSEILLE	673	6,30
VIENNA	747	6,50
BRATISLAVA	791	7,25
BUDAPEST	840	8
FRANKFURT	876	8,20
BELGRADE	905	8,30
LEIPZIG	978	8,50
BONN	1.017	9,30
COLOGNE	1.040	9,40
PARIS	1.060	10
BARCELONA	1.131	10,40
AMSTERDAM	1.289	12



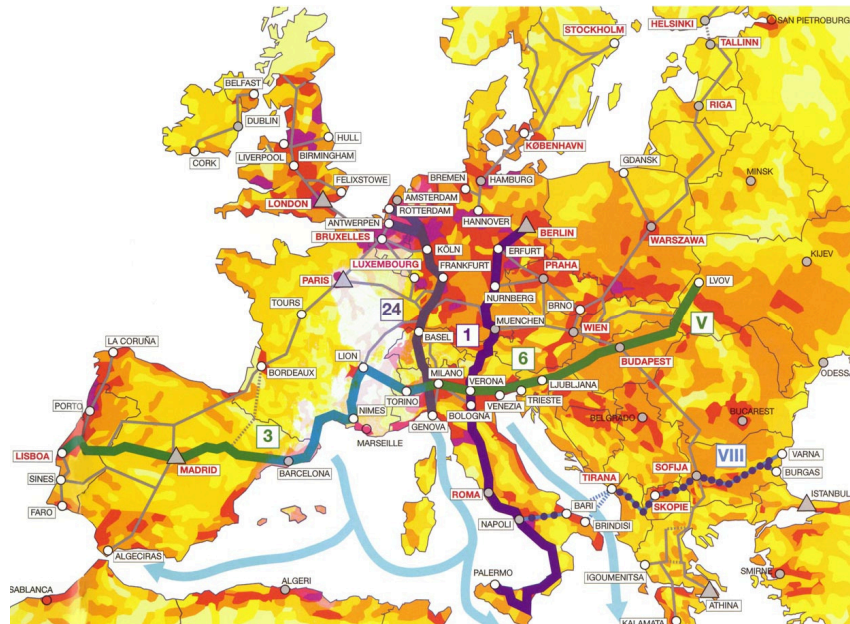


Bologna Airport

Bologna's strong points mean business

Bologna gets a brilliant draw

- strategic position, right at the crossing-point of the most important highways in the country
- central location, in the middle of Italy's most important industrial area
- proximity to Europe's key cities in terms of economic relevance and logistical structures



Business Potential of the area

Industrial districts and trade fair centre



→ Home to numerous leading international companies (ceramics, motors, food and industrial machinery industries)
→ Italy's second largest Trade Fair Centre with over 75 outstanding exhibitions in Italy and abroad



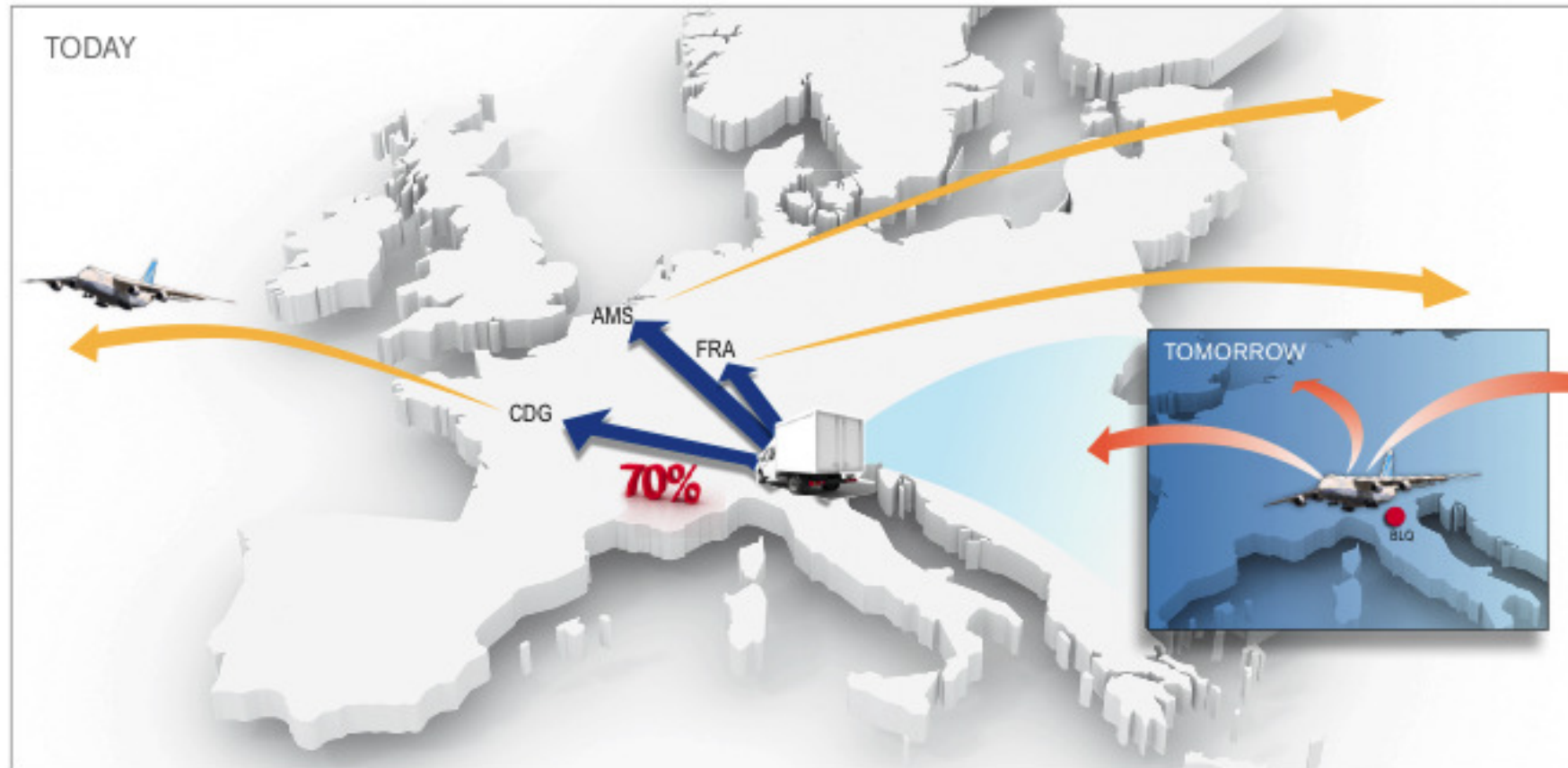
Bologna Airport

Increasing capacity fills the gap. Seize the golden opportunity

- Almost 70% of Italian air freight is currently trucked via the major European hubs (Frankfurt - Paris - Amsterdam)

THUS

there is a lot of room for improvement in this market - and a great business opportunity at hand!





Bologna Airport

Being a world-class cargo hub for Southern Europe. We've got what it takes

- No traffic congestion
- 24/7 services
- Best value for money
- Fast customs clearance (ready to deliver in 4 hours time) and radioactive certification (DGR Class 7, until 50 T.I.-transport Index-)

CARGO INFRASTRUCTURES

Warehouses

- warehouse equipped with refrigeration units, cells for live animals
- radiogenic checking machines for security screening

Equipment

- cargo loader (main-lower deck)
- packing and unpacking, moving and stocking equipment for pallets and unit loads
- automatic platforms
- docks for loading and unloading trucks
- forklifts for loads from 20.000 to 80.000 Kilos
- Completely automated management of all inbound and outbound freight using bar code readers





Bologna Airport

A case history that is our guarantee for the future.

Ability to manage extra-size shipments



- In 2010 and 2011: our cargo area hosted **4 Boeings 744** arriving simultaneously from Indianapolis, with 250 Tons of Moto GP freight on board.
- Big freighters for Moto GP events by Cargolux (747) and Nippon Air (747)
- In 2011 and 2012: all cargo charters by Kalitta Air and Southern Air
- We are used to brilliantly managing the **Antonov AZ124-100**, as well as other “big birds”.





Bologna Airport

Bound to be fast, flexible and efficient, 24/7.



OUTBOUND SERVICES:

- Cargo acceptance and storage
- Document and freight checks
- Special load, check AVI, check VAL, ADR
- Customs clearance
- DGR check
- Build up pallets
- Direct shipment within Italy
- Export Agency

INBOUND SERVICES:

- Inbound cargo acceptance
- Check of documents and freight
- Notification of irregularities
- Delivery of documents
- Storage of freight in different warehouse areas
- Fee collection
- Import Agency

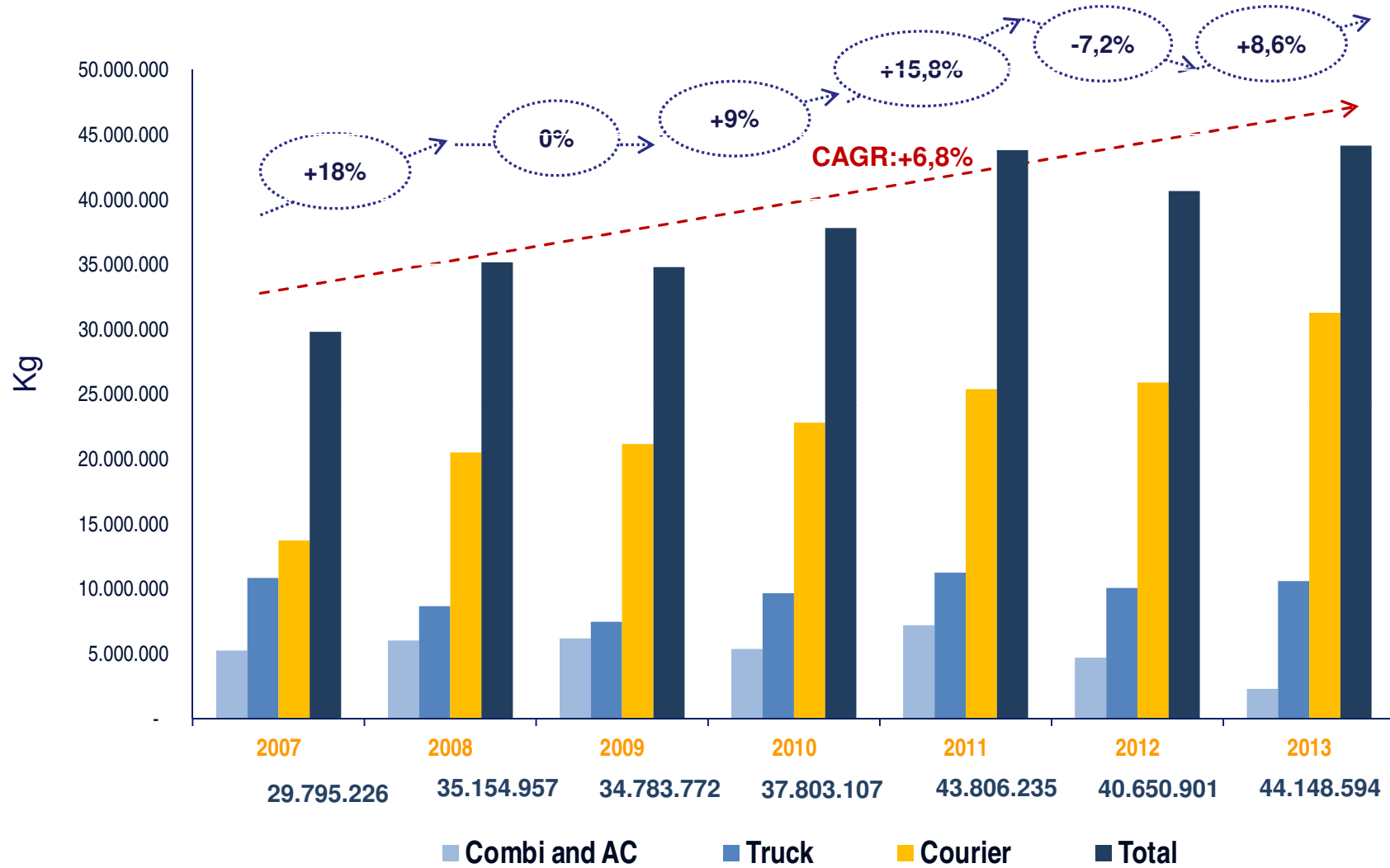
All our staff are trained according to IATA standards (DGR IATA certified and trained to manage AVI, perishables and in issuing ADR documents in accordance with road transport requirements).





Bologna Airport Cargo Volumes 2007-2013

4 TH-Ranked Italian cargo airport for volumes in 2013



2013 AIR TRAFFIC FIGURES

ITALY: +1,5%
EUROPE (ACI): +1,8%

CAGR = Compounded Annual Growth rate



Bologna Airport Air Cargo Market: Break Down by players

... and their shares

COURIER

71%



**COMBI FLIGHTS
(Pax and Cargo)**

4%



ALL CARGO

1%



TRUCK

24%





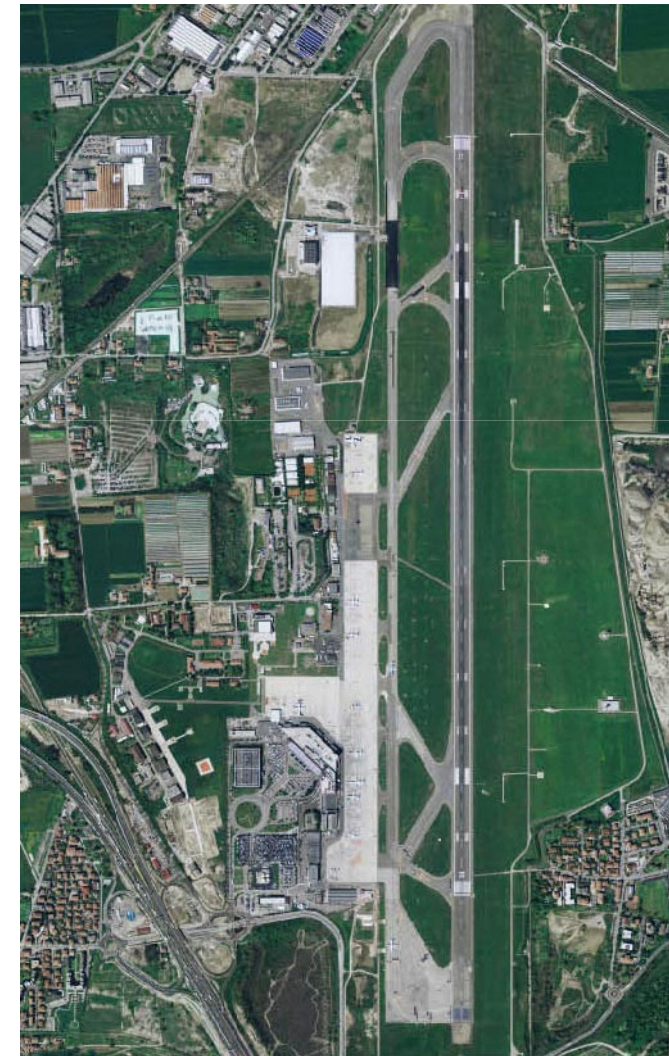
Bologna Airport

Modern infrastructures mean smooth cargo operations



Bologna Airport technical figures

Runway Figures				
RW/Y	TORA	ASDA	TODA	LDA
12	2800	2920	2800	2493
30	2800	2860	2800	2438
AD ELEV				123 ft
Runway Bearing Streight		RWY		PCN 70F/A/X/T
Operational Facilities				
Land Side				
Air Terminal				
Total Surface for Passengers				26.500 sq m
First Floor				13.500 sq m
Second Floor				10.700 sq m
Gates				22
Check-in Areas				3
Check-in Counters				74
Conveyor belts baggage reclaim				9
Parkings				
Total Surface				98.400 sq m
Parking Spaces				5.100
Air Side				
IATA Code				BLQ
ICAO Code				LIPE
Runway				12/30
Length				2.800x45 mt
Opening				24h
Movements/h				24 max
ICAO Category				4C
FIRE Category				8°
NAV AIDS		ILS cat III B, VOR/DME, NDB, VDF, SMR, ATCR33S Total		
Surface				245 Ha
Airstrip				168.000 sq m
Taxiways and junctions				163.000 sq m
Fuel Company				CARBOIL/AIR BP
Aprons				
Apron 1				92.500 sq m
Apron 2				63.000 sq m
Spaces Apron 1				15
Spaces Apron 2				13 + 5 General
Aviation				
Total Spaces Aprons				33





Bologna Airport

Time has flown. Do you want to know more?



Just ask us. We are willing to prepare market analysis based on your needs.

**AEROPORTO
G. MARCONI DI BOLOGNA S.P.A.**
Via Triumvirato,84
40132 Bologna (ITALY)
www.bologna-airport.it

Antonello Bonolis
Aviation Business Director
aviationbusiness@bologna-airport.it
tel: +39 051 647 9693
fax: +39 051 647 9731

Silvia Arceci
Cargo Manager
arceci@bologna-airport.it
tel: +39 051 647 9733
fax: +39 051 647 9719

Ilaria Bimbi
GH and Warehouse Services
bimbi@marconiffm.it
tel: +39 051 647 9767
fax: +39 051 647 9719

